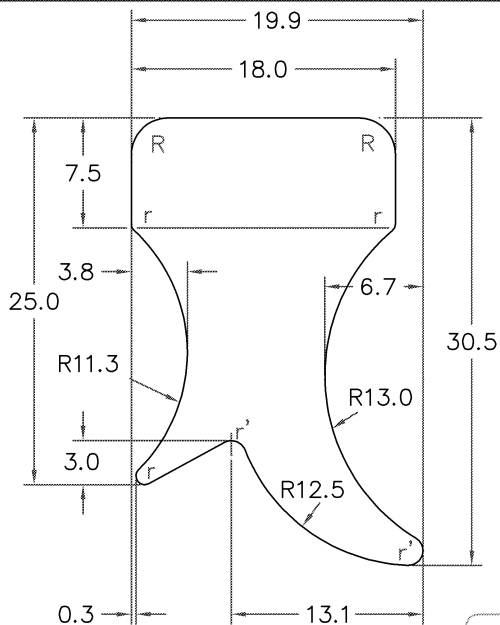


Date	Nº	Modification	322/93	Request Nº	E	Drawer	Reviser
19.04.93	A	Desenhado			1	Z. F. F.	
19.12.96	B	Acerto projeto			1	Vagner	



**OBS.:**  
**NOTE:**

-Fornecimento: Lances curvos de 2360mm  
Supply: 2360mm long curved rolls

-R = r.2.5mm  
-r = r.0.6mm  
-r' = r.1.0mm

**MATERIAL:** Conforme ASTM D1056/85

According

1A2 A1 B1 C1 C2 Z1 Z2

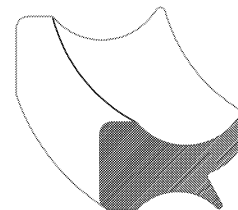
Z1=Nao manchante

Non-staining

Z2=Material: SBR com resistencia  
ao intemperismo

Dureza: 50 ±5 SHORE "00"

Hardness





**Modo de enrolar**  
How to roll up



**DETALHE PERFIL**  
DETAIL OF PERFIL  
Scale 1:1

Tolerancias, quando não especificadas são conforme: DIN 7715 Classe E.1 (h7/g6)  
Where not otherwise specified, tolerances shall be in accordance with DIN 7715 Class E.1 (h7/g6)

2.5 - 4	4 - 6.3	6.3 - 10	10 - 16
±0.25	±0.35	±0.4	±0.5
16 - 25	25 - 40	40 - 63	63 - 100
±0.7	±0.6	±1.0	±1.3

 <b>Marcopolo</b> Caxias do Sul - RS BRAZIL	Surface Treatment:	Post:	Denomination:
	Date:	BORRACHA VEDACAO TOMADA DE AR	
Drawer:  Reviser: Approved:	Use:	Scale:	Code: Computer Aided Design
		3.0:1	98130272-8
		View System	