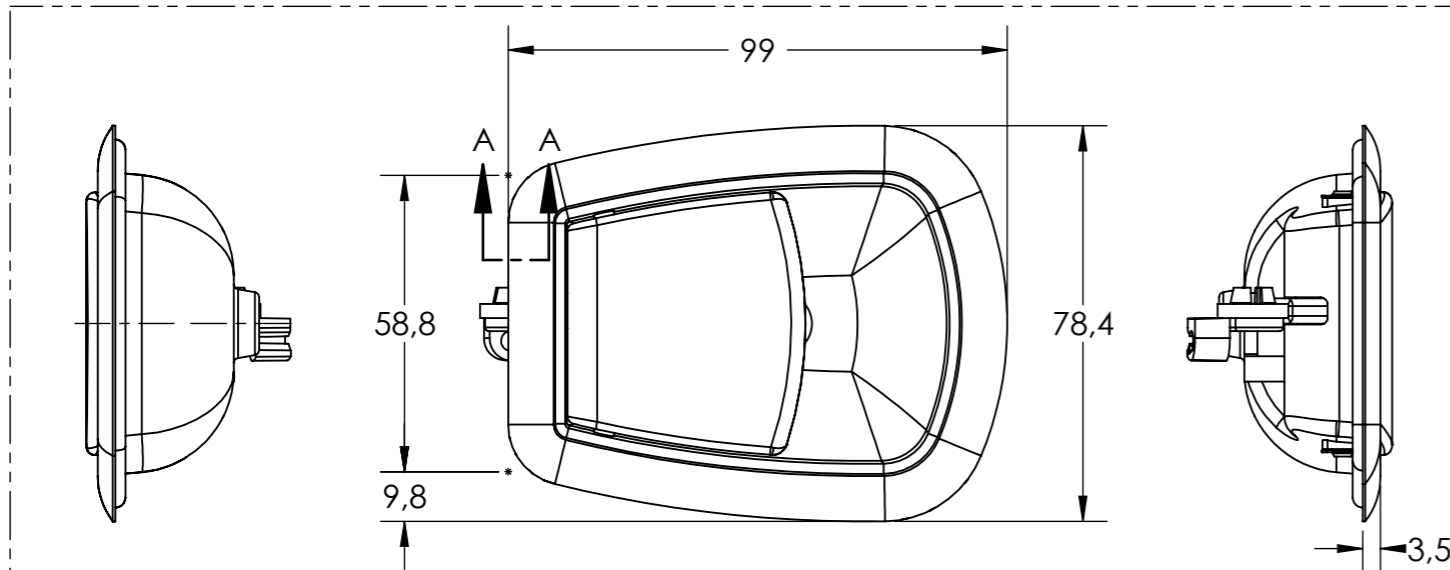
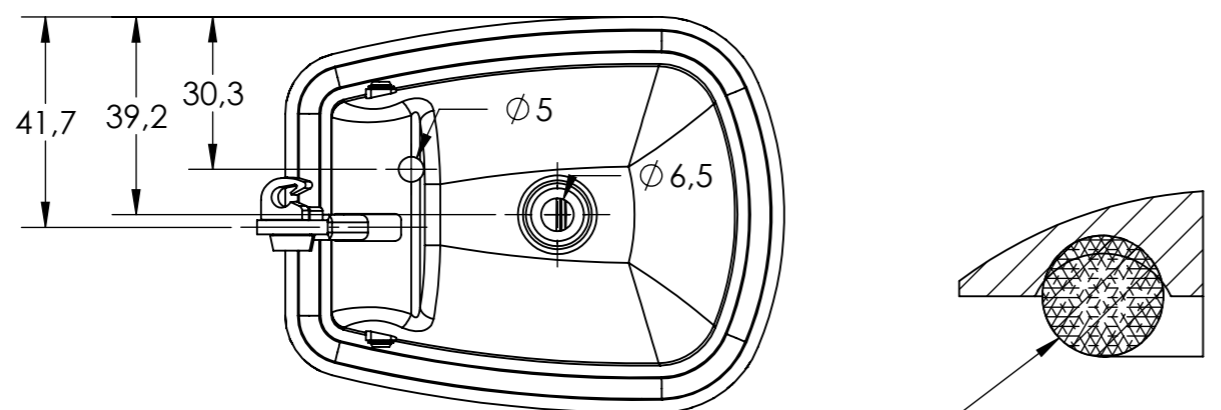
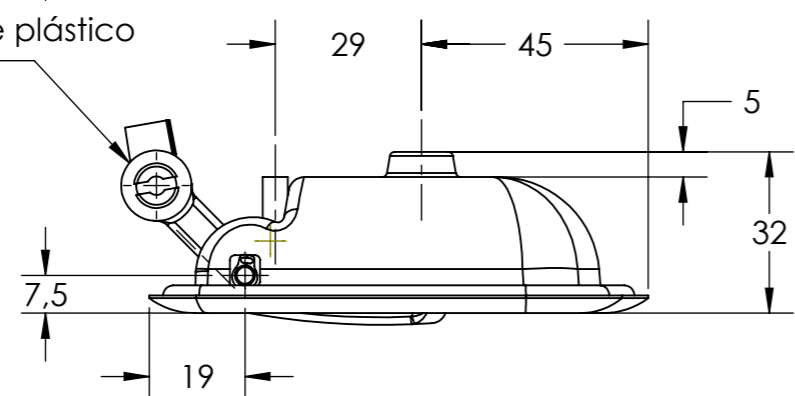




Number	Date	Modification	E	Owner
500000030672	06/08/2009			BRUNOLI
500000407335	24/04/2019	ACRESC. DETALHAMENTO PEÇA 02, SPP 1255945.		FABERSIQ



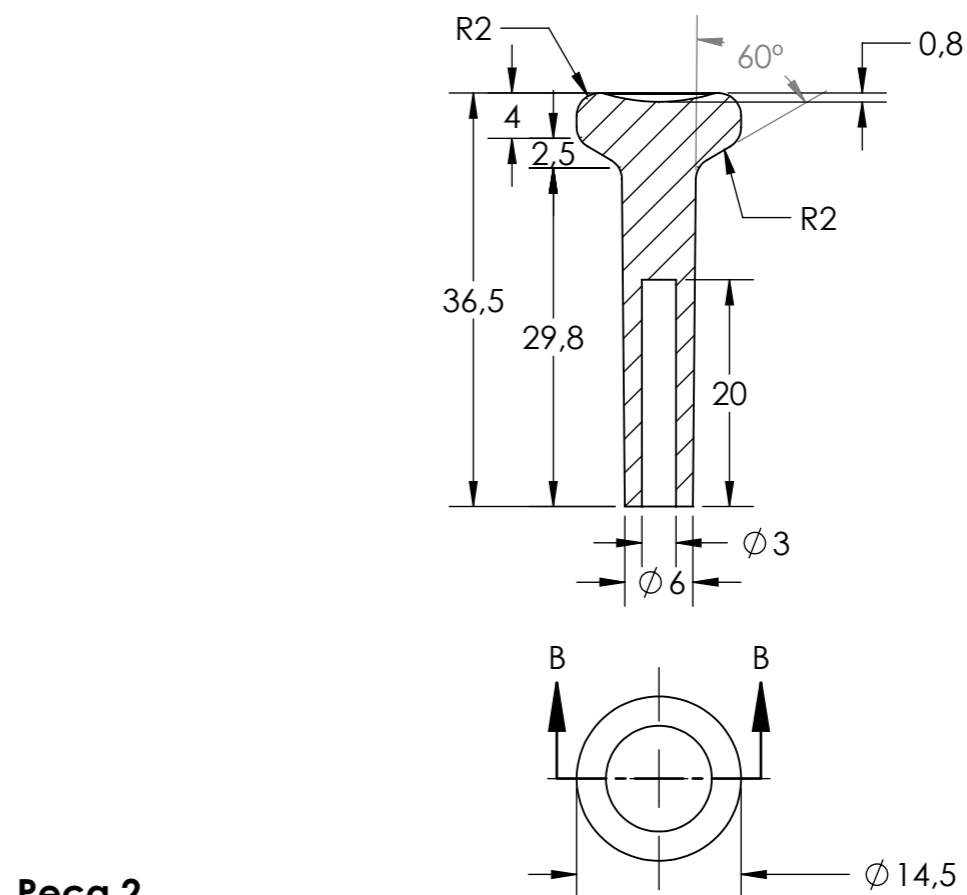
Fornecer c/ entegate plástico p/ fixação do varão



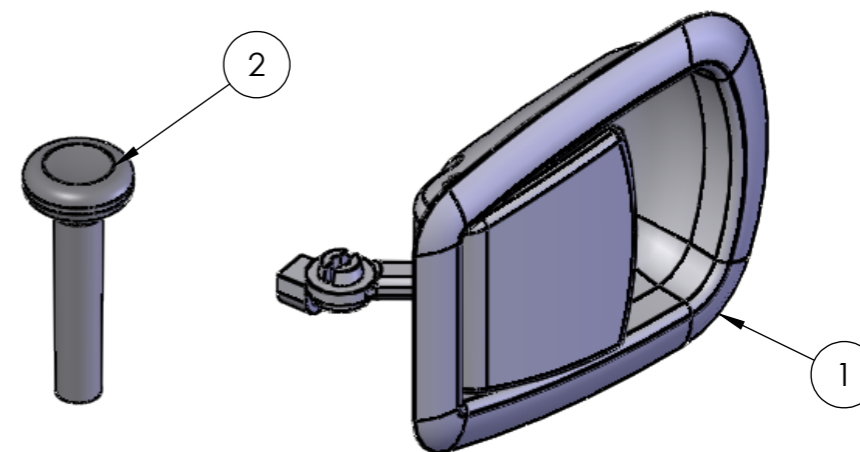
APLICAR PU PARA VEDAR
APPLY PU TO SEALING

SECCAO "AA"
"AA" SECTION
Scale 4:1

Peça 1



Peça 2



ITEM	CODE	QTY
------	------	-----

MATERIAL CORPO PRINCIPAL:
PRINCIPAL BODY MATERIAL:

POLIAMIDA 6.0 COM 30% DE FIBRA DE VIDRO
POLYAMID 6.0 WITH 30% FIBERGLASS

COR PRETO COM TEXTURA 1
BLACK COLOR WITH TEXTURE 1

***PEÇAS METALICAS TRATAR C/ ZINCADO AMARELO (FeZn 12C2)**
METALIC PARTS TREATMENT WITH YELLOW ZINC (FeZn 12C2)

	Scale: 1:1	Date: 25/04/2019	MAÇANETA INTERNA INTERNAL DOORKNOB MANIJA INTERNA
	View System:	Liquid weight(Kg): 0,076	
	Origin:		
	Version: AB		
Project Office: ENO_MPIO	Use: PORTA MOTORISTA E CAMAROTE.	Code: 10160592	
Reviser by SAP WorkFlow VIEW IN PLM SYSTEM		Class: 001364	
Drawer: FABERSIQ			

Tolerâncias quando não especificados
soo conforme DIN ISO 2768-1 classe c =

Dimensões	3 - 6	6 - 30	30 - 120	120 - 400	400 - 1000	1000 - 2000	2000 - 4000
Longitudinais	+0,2	+0,3	+0,5	+0,8	+1,2	+3	+4
Chamfero	+0,4	+0,5	+0,8	+1,2	+1,5	+3	+4
Raios	+0,2	+0,3	+0,5	+0,8	+1,2	+3	+4

Alças e alças de apoio: tolerâncias em mm ISO 2768-1 classe c =

Dimensões	3 - 6	6 - 30	30 - 120	120 - 400	400 - 1000	1000 - 2000	2000 - 4000
Longitudinais	+0,2	+0,3	+0,5	+0,8	+1,2	+3	+4
Chamfero	+0,4	+0,5	+0,8	+1,2	+1,5	+3	+4
Raios	+0,2	+0,3	+0,5	+0,8	+1,2	+3	+4